

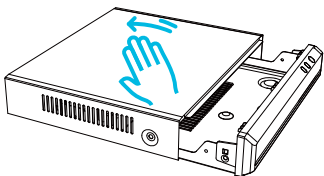
zmodo™

sPoE NVR system
Quick Start Guide

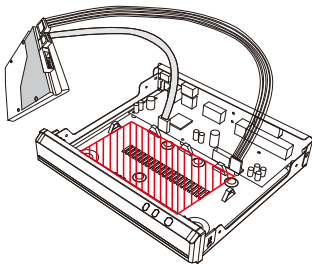
1 HDD Installation

If your system does not include a pre-installed HDD, you can purchase your own and follow the steps below for installation. Make sure you purchase a 3.5" HDD optimized for always-on read/write surveillance, e.g. **low-power WD10PURX** hard drives.

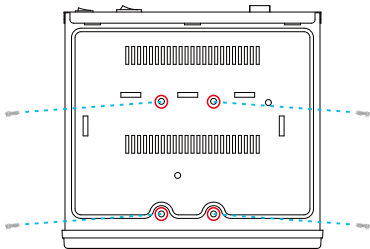
- 1 Make sure that your NVR is powered off and unplugged from the power source. Slide the cover off of the NVR.



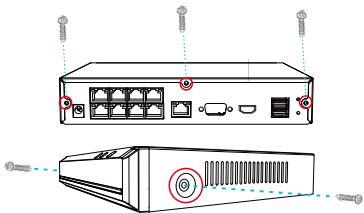
- 2 Connect the HDD to the NVR using the corresponding SATA power and data cables. Insert the HDD into the NVR in the red zone shown below.



- 3 While keeping the HDD in place, turn the NVR over and line up the holes on the HDD with the holes on the bottom of the NVR. Using the four provided HDD screws, fasten the HDD to the NVR until secure.

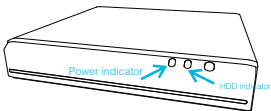


- 4 Replace the cover, and fasten the cover to the NVR using the five provided case screws.



NVR Status Indicator

The two LED indicators will let you know the status of your NVR. Please refer to the chart for specific details.



Power indicator:



Solid green

The NVR is powered on. No light means that the NVR is off.

HDD indicator:



Solid green

There is no HDD, your HDD is not recording, or there is a problem with your HDD.

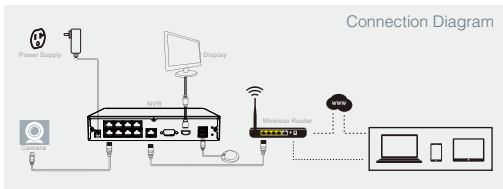


Blinking green

The hard drive is recording properly.

2 Connecting your system

This quick guide will help you configure your NVR kit for initial use. Follow the steps below and refer to the diagram to connect your NVR system.



- 1 Power on the NVR by plugging it into a nearby power outlet using the power adapter provided.
- 2 Connect the NVR to an empty network port on your WiFi router using an ethernet cable (included).
- 3 Connect the cameras to the back of the NVR using the provided simplified Power over Ethernet (sPoE) cables. This cable will provide both video and power to your cameras. Please connect all cameras and make sure that they work before performing permanent installation.
- 4 (Optional) You can connect an external monitor to view your NVR locally. Use the HDMI or VGA port (cable not included) to connect your NVR to a local display, and connect a USB mouse to control it.

Note: There will be no password when you first use your NVR locally. However, we strongly recommend that you set a password after you configure your NVR. Set a password by going to the Main Menu > General Settings > Account Settings.

Safety Requirements

- Place your NVR in a well-ventilated area.
- Do not place any objects on top of your NVR.
- Try to keep your NVR in a cool operating temperature.
- Do **NOT** move or shake the NVR while operating, or else the hard drive will be damaged.
- Use a surge protector to protect the NVR from shortages.
- Use only the provided power adapters with your products.
- If water or any liquid comes into contact with the NVR, unplug it immediately and contact Zmodo support.

3 Configuring your system

Local Viewing

If you are accessing your system locally, please make sure that you have properly connected your system (Part 2), and power on your NVR. Once you have logged into your NVR interface, please wait 3-5 minutes for your system to automatically add the cameras.

Remote Viewing

You can access your system from any location with a working internet connection. In order to set up remote viewing. Follow the steps below to configure your system for remote viewing:

- 1 Connect your mobile device to the same WiFi network that your NVR is connected to.
- 2 Download and install the “Zmodo” app from Google Play™ or the App Store™ (compatibility: iOS® 9.0+ or Android™ 4.0+). Launch the app and sign up for a free Zmodo account. All of your devices will be bound to this account.

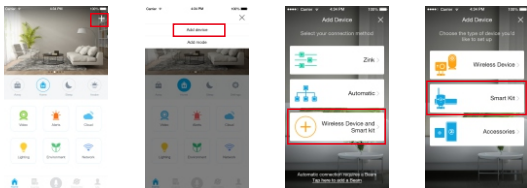


Zmodo



- 3 Network Requirements:
720p cameras: Requires at least 1mbps upload when live viewing or 2mbps upload when using the Cloud Service for each camera.
1080p cameras: Requires at least 2mbps upload when live viewing or 4mbps upload when using the Cloud Service for each camera.

- 4 Log into your Zmodo account within 15 minutes of powering on your NVR. The NVR and cameras will be automatically added onto your account. If not, tap the [+] Add Device icon on the upper right corner of the Home Screen. Select the “Wireless Device and Smart Kit” connection method and select the “Smart Kit” option. The app will automatically search for NVRs that are connected to the same network as your mobile device. Add your NVR and press “Finish” when prompted. You will not need to configure any cameras.



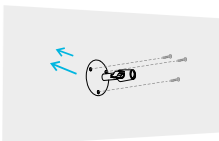
- 5 In addition to viewing your system locally on your monitor and remotely on your mobile device, you can also access your system from any location with our web app. Just type user.zmodo.com into your web browser and log in using your Zmodo account information.

4 Mounting your cameras

- If you're installing your cameras outdoors, all wired connections must be weatherproofed.
- Before you perform any permanent installation and route wires, plug in your cameras to the NVR using the provided cables to make sure no components were damaged during shipping.
- Before installing the cameras, carefully plan where and how they will be positioned, and how you will route the wiring that connects your cameras to the NVR.

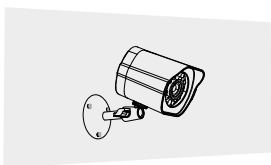
Bullet Camera

- 1 Line the camera bracket against the wall where you would like to install the cameras, and mark the appropriate holes. Drill three holes slightly smaller than the wall anchors and use a hammer to gently insert the anchors into the wall. Fasten the three screws through the holes on the bracket and into the anchors as shown.



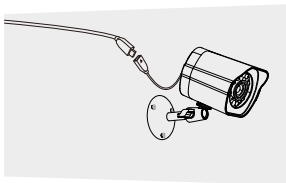
(Image may vary for your specific camera model.)

- 2 Fasten the bracket to the camera. You will be able to adjust the camera position using the adjustable camera bracket. Position the camera for an optimal viewing angle, and tighten the bracket.



(Image may vary for your specific camera model.)

- 3 Connect the camera to the back of the NVR using the provided simplified Power over Ethernet (sPoE) cable. Repeat steps 1-3 for all cameras in your camera kit.



(Image may vary for your specific camera model.)

5 Troubleshooting

The NVR doesn't recognize the correct cameras.

Your NVR may be recognizing other cameras on your network. Please manually delete all cameras by going to the "Add Device" menu from your NVR's interface. Select the "Search and Add All Devices Automatically" option, and wait 3-5 minutes for the NVR to add the camera. If this fails, you can also disable the automatic search and add your camera manually.

I can't access the NVR remotely.

Please make sure your internet is working, and check that your NVR is properly connected to the router.

The app doesn't find my NVR during setup.

Make sure that your NVR is properly connected and powered on, and reconnect your phone to your WiFi network. You may need to exit the setup and try again.

6 Support

Having difficulty?

You can use the Live Chat function in Zmodo app if you have any technical problems.

Please follow the steps below:

Access the "Me" page in the lower right corner in Zmodo app and select "Zmodo Support".

For more instructions, troubleshooting, support, and other resources, please visit:

www.zmodo.com/support



Like us on Facebook.com/Zmodo
Scan the QR-code below!



Follow us on Twitter @Zmodo
Scan the QR-code below!



Android is a trademark of Google Inc. Google Play is a trademark of Google Inc. Apple, the Apple Logo, and iPhone are trademarks of Apple Inc., registered in the U.S. and other countries. App Store is a service mark of Apple Inc.